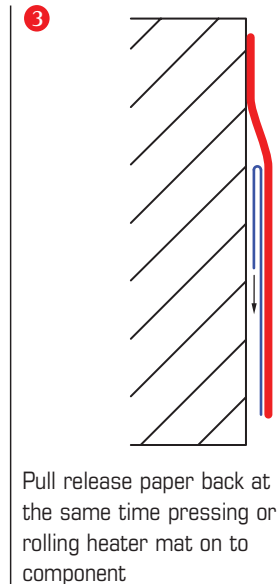
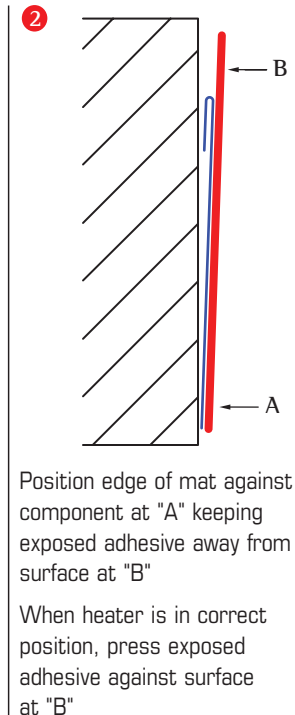
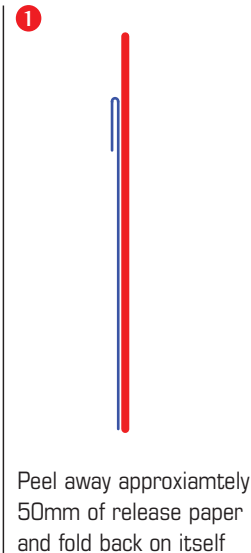


## INSTALLATION OF SELF-ADHESIVE HEATER MAT:

- 1 Care should be taken not to bend, crease or fold the element especially whilst the backing paper is on the mat.
- 2 Ensure surface to be heated is clean of grease and dirt (use cleaning solvent if required).
- 3 Peel release paper from farthest corner away from the lead connection (as Fig.1)
- 4 Place the heater mat into position immediately after peeling off the paper to avoid any dust or grit adhering to the heater (as Fig. 2)
- 5 Place the heater mat into exact position, roll from one edge against the surface to be heated and press firmly ensuring good even contact (as Fig. 3)
- 6 Route and secure heater mat cold lead/cable
- 7 Visually inspect heater mat installation.
- 8 Electrically static test heater mat for correct element resistance reading and earth isolation.
- 9 Equipment that the heater mat is fitted to should provide protection against electrical shock according to relevant European standards.



Note. Once heater mat is installed it cannot be re-applied

## CE STATEMENT:

In line with the company policy of continued improvement and incorporation of the latest development on electrical construction and safety of our products, we are pleased to issue the following statement with respect to the EEC Directive 768/2008/EC on CE Marking of electrical products.

The insulation system and construction of the Heaters meet the requirements of all the relevant EEC Directives including the Low Voltage Directive (LVD) and the Electromagnetic Compatibility Directive (EMC).

To meet these requirements "The Heaters" are produced to meet or exceed the requirements of all the relevant national and international standards.

In line with these directives we have "CE" marked the heaters this being The Recognised Declaration within the European Economic Area (EEA) of compliance with EEC Directives.

As required by the EEC Directives, 2006/95/EEC (LVD) and 2004/108/EC (EMC), the following are held at our Registered Company Office and Main Factory:-

- Technical Files.
- Design details and drawings.
- Construction details and drawings.
- Test details.
- Third party test reports where applicable.

As the "Heater" is supplied as a component to the customers specifications for installation by them as part of a final product, the installation and conditions of "The Heater" are beyond our control. The suitability for use and assessment to the EEC directives when "The Heater" is incorporated within the final product will need to be made by the customer.



ISO 9001:2008  
FM 558985



**T&D** **THORNE &**  
**DERRICK UK**

**Tel:** +44 (0) 191 490 1547  
**Fax:** +44 (0) 191 477 5371  
**Email:** [northernsales@thorneandderrick.co.uk](mailto:northernsales@thorneandderrick.co.uk)  
**Web:** [www.heatracing.co.uk](http://www.heatracing.co.uk) &  
[www.thorneandderrick.co.uk](http://www.thorneandderrick.co.uk)