

WASHROOM SANITARYWARE

Offering a range of ready plumbed modules, WC pans, basins and urinals, high quality access panels and sanitaryware are the ideal accompaniment to the DVS range.



UC07-001 >>
Urinal control system

DVS have teamed up with specialists The Sanitaryware Company to help provide an easier all-round solution to purchasing complete washroom suites. SanCeram ceramics compliment DVS products very well and add that finishing, professional touch.

SANCERAM CERAMICS BY THE SANITARYWARE COMPANY



With SanCeram's large catalogue of ceramics you can be sure to find the perfect companion for so many DVS automatic washroom products.

All the ceramics shown are vitreous china built to BS 3402 standards. The glaze is integral with the ceramic body and is resistant to water absorption, burning, stains, scratching and attack by acids or alkalis.



SW00-031 Chartham Rimless WC BTW 750mm Projection



SW00-029 Chartham Back To Wall WC, 480mm High



SW00-036 Chartham Concealed Trap Urinal



SW00-026 Chartham Standard Wall Hung WC



SW00-045 Chartham 500mm Wall Hung Basin with Right Hand Tap Hole



SW00-042 Chartham Wall Hung Back Outlet Basin

CERAMICS



SW00-047 Chartham Wall Hung Basin, 380mm with Right Hand Tap Hole

DOC.M PACK



SW00-051 SanCeram Back to Wall Doc M Pack, Left Handed with White Rails.

WASTES



SW00-050 1 1/4" Click Clack Unslotted Waste



SW00-055 1 1/4" Click Clack Slotted Waste



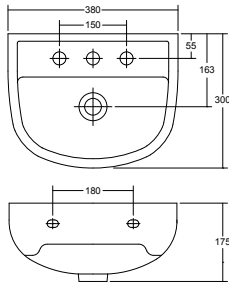
SW00-049 1 1/4" Unslotted Strainer Waste



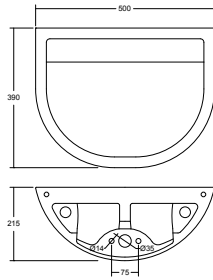
SW00-056 1 1/4" Slotted Strainer Waste

Dimensions

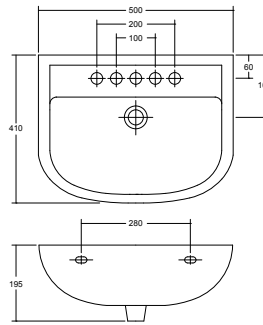
CERAMICS



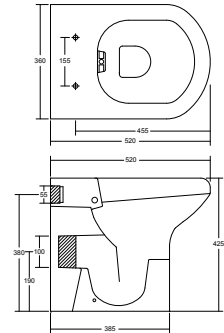
SW00-047 & SW00-048 ⚡
Chartham basin WH 380mm
RH/LH tap hole options



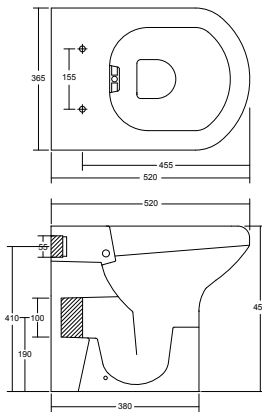
SW00-042 ⚡
Chartham basin WH 500,
back outlet



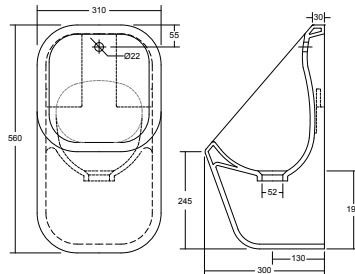
SW00-045 & SW00-046 ⚡
Chartham basin WH 500mm
RH/LH tap hole options



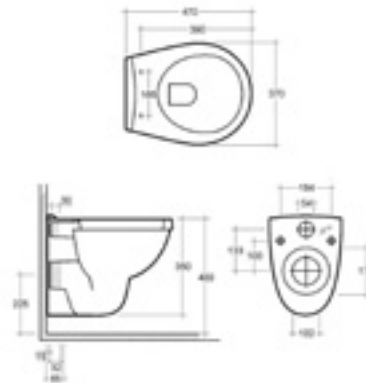
SW00-028 ⚡
Chartham WC BTW 450mm



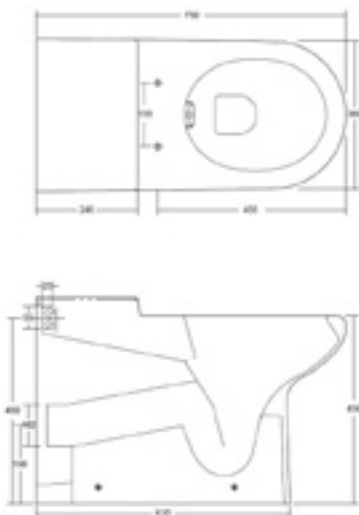
SW00-029 ⚡
Chartham WC BTW 480mm



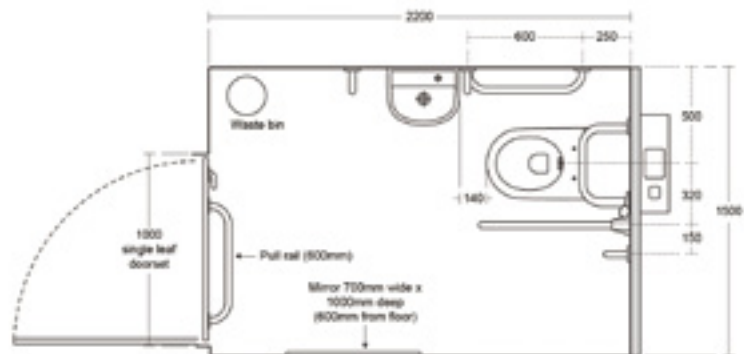
SW00-036 ⚡
Chartham concealed trap urinal



SW00-026 ⚡
Chartham WC WH standard

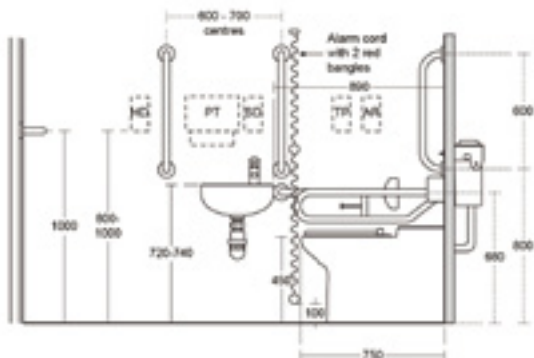


SW00-031 ⚡
Chartham WC BTW 750mm



HD - Possible position for automatic hand dryer
SD - Soap dispenser
PT - Paper towel dispenser
AR - Alarm reset button
TP - Toilet paper dispenser

Clear space should not be infringed by any other fixtures



SW00-051 ⚡
SanCeram Back to Wall Doc M Pack, Left Handed
with White Rails.

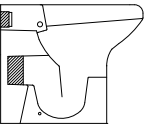
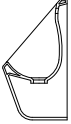
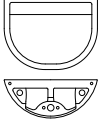


Please note: Illustrations not to scale

WASHROOM SANITARYWARE

Ceramics

All the ceramics shown are vitreous china built to BS 3402 standards.

Ceramics

Profile (Not to scale)	Code	Description
	SW00-026	Chartham WC WH standard
	SW00-027	Support brackets & fixings for WH WC
	SW00-028	Chartham WC BTW 450mm
	SW00-029	Chartham WC BTW 480mm
	SW00-030	Chartham WC BTW 700mm
	SW00-031	Chartham WC BTW 750mm
	SW00-032	Chartham seat & cover, wall hung only
	SW00-033	Chartham seat & cover, standard BTW
	SW00-034	Chartham seat, no cover white
	SW00-035	Chartham seat, no cover blue
	SW00-036	Chartham concealed trap urinal
	SW00-037	Chartham urinal spreader
	SW00-038	Chartham urinal separator
	SW00-039	1 1/2" plastic domed waste
	SW00-040	1 1/2" P trap 75mm seal
	SW00-041	1 1/2" plastic elbow
	SW00-042	Chartham basin WH 500, back outlet
	SW00-043	1 1/4" Waste outlet adaptor, hanger and toggie bolts
	SW00-045	Chartham basin WH 500mm RH tap
	SW00-046	Chartham basin WH 500mm 2 tap
	SW00-047	Chartham basin WH 380mm RH tap
	SW00-048	Chartham basin WH 380mm LH tap
	SW00-051	Doc M LH White
	SW00-052	Doc M LH Blue
	SW00-053	Doc M RH White
	SW00-054	Doc M RH Blue
	SW00-056	1 1/4" Strainer Waste, Slotted
	SW00-049	1 1/4" Strainer Waste, Unslotted
	SW00-055	1 1/4" Click Clack Slotted Waste
	SW00-050	1 1/4" Click Clack Unslotted Waste