

Systems Accessories

Thermon Heat Tracing Cables

Product Specifications

Terminator™ Nonmetallic Power Connection, Splice and End-of-Circuit Light Kits . . .

Terminator nonmetallic accessories are approved for ordinary and Division 2 hazardous locations. The kits have a maximum pipe exposure temperature rating of 482°F (250°C) with a minimum installation temperature of -76°F (-60°C).



Terminator DP... is designed to fabricate power connections, in-line/T-splice connections or for making end terminations. Electrical connections are made in terminal blocks utilizing nickel-plated copper terminals to ensure corrosion-free electrical integrity. The upfront positioning of the terminal block permits easy access during assembly and for future routine maintenance.

The Terminator DP kit includes; NEMA 4X junction box with integral gasket, three-point DIN mount terminal block with nickel-plated copper terminals (600 V, 50 A), pipe-mounted fitting, stainless steel pipe attachment band for piping 10" or less. (PETK/SCTK termination kit required, order separately)

Product Reference Legend:

DP....BSX, RSX, HTSX, KSX, TSX, VSX, HPT, FP
DP-MTEK, HTEK,



Terminator DS/DE... is designed to fabricate accessible outside-the-insulation in-line splices or end terminations. Electrical connections are made using wire fasteners. Once the kit is assembled, a tool is required to remove the cover to gain access for maintenance or testing. (For applications requiring terminations to be made with terminal block connections, the Terminator DP or DL kit may be used.)

The Terminator DS/DE kit includes; NEMA 4X pipe-mounted fitting with locking splice cover, stainless steel pipe attachment band for piping 10" or less. (SCTK termination kit required, order separately)

Product Reference Legend:

DS/DE....BSX, RSX, HTSX, KSX, TSX, VSX, HPT, FP



Terminator DL... is designed to provide visual indication of an energized heating circuit. The kit may be utilized as a power connection or an end termination kit. Electrical connections are made in terminal blocks utilizing nickel-plated copper terminals to ensure corrosion-free electrical integrity.

The Terminator DL kit includes; NEMA 4X junction box, yellow raised light, diode indicating lamp can be energized with up to 254 Vac without change in luminosity, three-point DIN mount terminal block with nickel-plated copper terminals, pipe-mounted fitting, stainless steel pipe attachment band for piping 10" or less. (PETK termination kit required, order separately)

Product Reference Legend:

DL.....BSX, RSX, HTSX, KSX, TSX, VSX, HPT, FP

TracePlus™ Nonmetallic Power Connection, Splice and End-of-Circuit Light Kits . . .

TracePlus nonmetallic accessories are approved for ordinary and Division 2 hazardous locations. The kits have a maximum pipe exposure temperature rating of 400°F (204°C) with a minimum installation temperature of -20°F (-29°C).

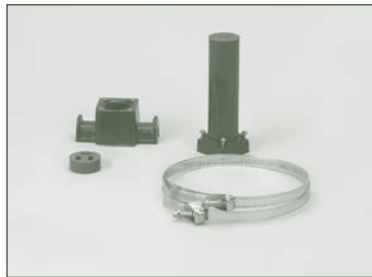


PCA... is designed to fabricate power connections, in-line/T-splice connections or for making end terminations.

The PCA kit includes; NEMA 4X junction box, pipe-mounted expediter, 2 stainless steel pipe attachment bands for piping 10" or less. (PETK/SCTK termination kit required, order separately)

Product Reference Legend:

PCA-HBSX, HTSX, KSX, HPT, FP
PCA-VRSX, TSX, VSX



PCS... is designed to fabricate accessible outside-the-insulation splices or end terminations.

The PCS kit includes; NEMA 4X pipe-mounted expediter with splice cover, 2 stainless steel pipe attachment bands for piping 10" or less. (SCTK termination kit required, order separately)

Product Reference Legend:

PCS-HBSX, HTSX, KSX, HPT, FP
PCS-VRSX, TSX, VSX



VIL-6... is designed to provide visual indication of an energized heating circuit. 120 Vac (option 1), 208 Vac (option 4), 240 Vac (option 2) or 277 Vac (option 3).

The VIL-6 kit includes; NEMA 4X junction box, pipe-mounted expediter, Amber light assembly, 2 stainless steel pipe attachment bands for piping 10" or less. (PETK termination kit required, order separately)

Product Reference Legend:

VIL-6-HBSX, HTSX, KSX, HPT, FP
VIL-6-VRSX, TSX, VSX



THERMON . . . The Heat Tracing Specialists®



100 Thermon Dr. • PO Box 609 • San Marcos, TX 78667-0609
 Phone: 512-396-5801 • Facsimile: 512-396-3627 • **800-820-HEAT**
 www.thermon.com In Canada call **800-563-8461**

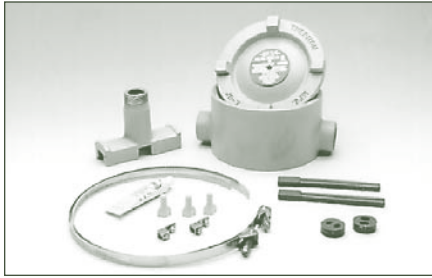
Systems Accessories

Thermon Heat Tracing Cables

Product Specifications

Metallic Power Connection, Splice and End-of-Circuit Light Kits . . .

Thermon metallic accessories utilize epoxy-coated aluminum junction boxes and expeditors and are approved for ordinary and Division 2 hazardous locations. The kits have a maximum pipe exposure temperature rating of 482°F (250°C) with a minimum installation temperature of -60°F (-51°C).



ECA-1...is designed for connecting one or two heating cables to power or for splicing two cables together.

The ECA-1 kit includes; epoxy-coated NEMA 4X/7 junction box, pipe-mounted expeditor, 2 stainless steel pipe attachment bands for piping 4" or less, heater cable grommet, 2 power connection boots, RTV adhesive, wire fasteners and grounding lug.

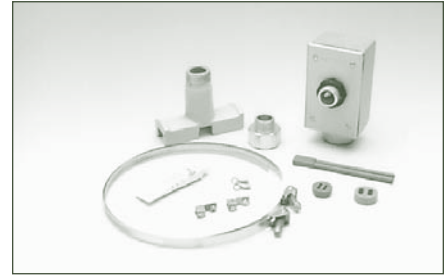
ECA-1-SR BSX, RSX, HTSX, KSX, TSX, VSX
ECA-1-ZN FP, HPT



ECT-2...is designed for connecting three heating cables to power or for splicing three cables together.

The ECT-2 kit includes; epoxy-coated NEMA 4X/7 junction box, pipe-mounted expeditor, third cable entry assembly, 2 stainless steel pipe attachment bands for piping 4" or less, heater cable grommets, 3 power connection boots, RTV adhesive, wire fasteners and grounding lug.

ECT-2-SR BSX, RSX, HTSX, KSX, TSX, VSX
ECT-2-ZN FP, HPT

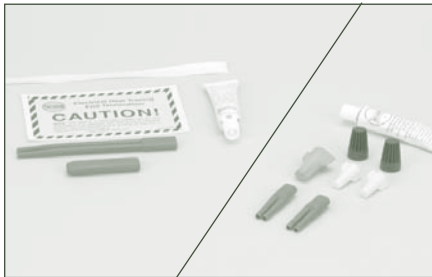


VIL-4C...is designed to provide visual indication of an energized heating circuit. 120 Vac (option 1), 208 Vac (option 4), 240 Vac (option 2) or 277 Vac (option 3).

The VIL-4C kit includes; pipe-mounted expeditor, amber light assembly in NEMA 4X box, 2 stainless steel pipe attachment bands for piping 4" or less, heater cable grommet, power connection boot, RTV adhesive, 2 ring terminals and grounding splice lug.

VIL-4C-SR BSX, RSX, HTSX, KSX, TSX, VSX
VIL-4C-ZN FP, HPT

Cable End Termination Kits, Attachment Tapes and Miscellaneous Items . . .



PETK...circuit fabrication kit includes a power boot, end cap, RTV adhesive.

SCKT...splice connection/termination kit includes a power boot, wirenuts, RTV adhesive.

PETK-1D / SCKT-1D BSX, RSX, TSX, VSX
PETK-2D / SCKT-2D KSX, HTSX
PETK-3D / SCKT-3D FP, HPT



ET-6C, ET-7C, ET-8C...end termination kits are designed to properly terminate the end (away from power) of a heat tracing circuit. Each kit includes a rubber end cap, RTV adhesive and caution label.

ET-6C BSX, RSX, TSX, VSX
ET-7C HPT (BN)
ET-8C HTSX, KSX, FP & HPT (O)



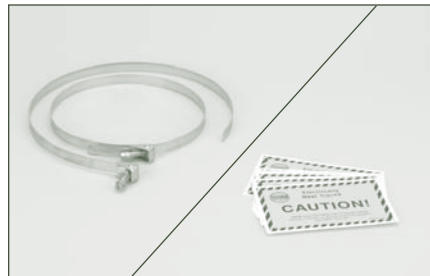
TBX-3LC, TBX-4LC...power connection boots are used to prepare heating cable for connection to power. Kit includes rubber boot and RTV adhesive.

TBX-3LC BSX, RSX, TSX, VSX
TBX-4LC HTSX, KSX, FP & HPT



TB-2F, TB-3F, TB-4F...floating terminal blocks for use inside metallic (ECA, ECT) and non-metallic (PCA, PCS) junction boxes.

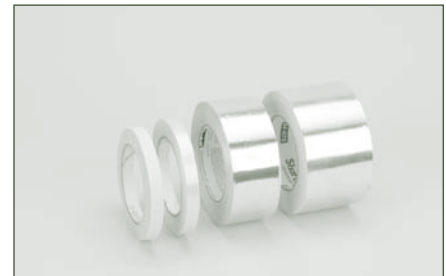
TB-2F 2-point-rated 65A @ 600 Vac, 22 - 6 AWG
TB-3F 3-point-rated 65A @ 600 Vac, 22 - 6 AWG
TB-4F 4-point-rated 30A @ 250 Vac, 26 - 10 AWG



CL...vinyl-based peel and stick caution labels are intended for direct exposure to industrial environments. Electrically heated pipelines and vessels are to be clearly identified at frequent intervals. Caution labels should be placed at 10'-20' (3-6 m) intervals or as required by code or specification.

B-4, B-10, B-21...stainless steel attachment bands for securing Thermon connection kits to pipes. Each kit includes two B-4 bands.

B-4...for pipes up to 4" (100 mm) diameter
B-10...for pipes up to 10" (250 mm) diameter
B-21...for pipes up to 21" (530 mm) diameter



FT-1L, FT-1H... fixing tapes for attaching heating cable to piping every 12" (30 cm) or as required by code or specification.

AL-20L, AL-20H, AL-30L, AL-30H... aluminum tape for continuous (longitudinal) covering.

Catalog #	Temp. Max.	Min. Install	Dimensions
FT-1L	200°F	40°F	1/2" x 108'
FT-1H	500°F	-40°F	1/2" x 108'
AL-20L	150°F	40°F	2" x 150'
AL-20H	300°F	20°F	2" x 180'
AL-30L	150°F	40°F	3" x 150'
AL-30H	300°F	20°F	3" x 180'

