

## 'FWD' Flameproof Air Warmers

The Heatex 'FWD' range of Air Warmers has been designed for heating small work or storage areas and similar applications, located in Zone 1 or 2 Hazardous Areas, where the flammable atmosphere is a IIC group.

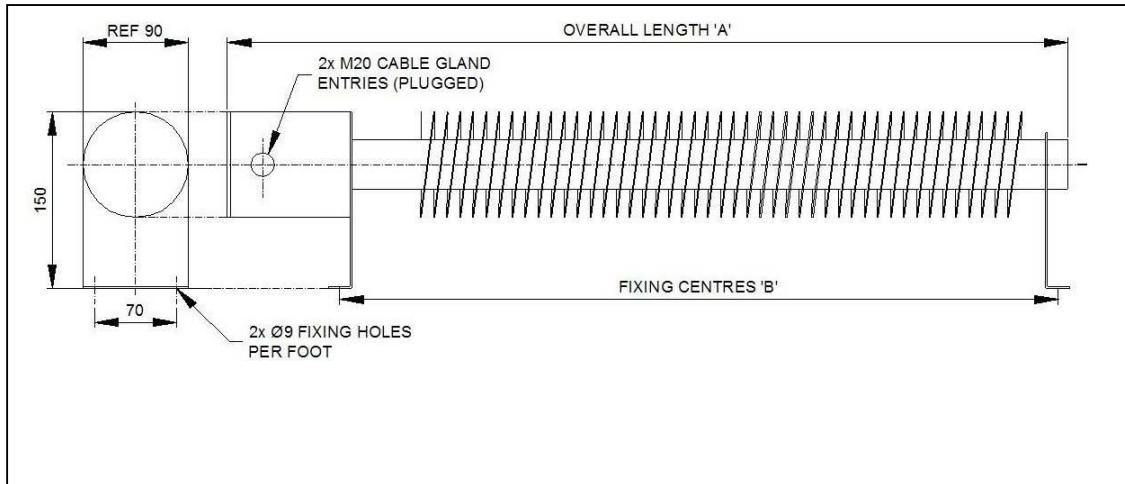


### FEATURES

- Certified to meet the ATEX directive 94/9/EC. For IECEx certified heaters contact sales@exheat.com
- Weatherproof to IP66/67.
- Suitable for 110v or 230/254v supplies.
- Temperature classifications T2, T3 and T4 available.
- Suitable for floor or wall mounting.
- 2 x 20mm (plugged) cable entries provided as standard.
- Powder Coated Mild Steel or Natural Stainless Steel finish.
- Suitable for ambient temperatures from -20 °C to +60 °C. (Subject to conditions to be discussed with sales engineer).
- Individually replaceable heating elements.

### TYPICAL APPLICATIONS

- Aircraft Hanger Service Bays
- Fuel servicing areas
- Chemical Plants
- Offshore Installations
- Battery Stores
- Gas Installations
- Containers
- Crane Cabs, etc.




## Rating

Standard mild steel heater ratings and sizes are shown below, stainless steel and other ratings to suit client individual requirements can be provided upon request.

Model	T' Class	Rating Watts	Dimensions		Weight (kg)
			A	B	
FWD-500-T3	3	500	800	670	9
FWD-1000-T3	3	1000	1300	1170	12
FWD-1500-T3	3	1500	1900	1770	17
FWD-2000-T3	3	2000	2450	2320	20
FWD-500-T4	4	500	1300	1170	12
FWD-750-T4	4	750	1900	1770	17
FWD-1000-T4	4	1000	2450	2320	20

## Certification

ATEX certified  II 2 G/D Ex'd' IIC T2 to T4  
IECEx Ex'd' IIC T2-T4 Ex tD A21 IP66

## Enclosure

Fabricated mild steel or stainless steel.

## Controls

If required the heaters can be controlled from the Heatex range of remote mounted thermostats available for use in safe or Hazardous Areas. (See separate data sheet).

## Mounting

Pre-drilled support feet supplied as standard.

## Voltage

Single phase 230/254v or 110v.